



JK ARCHITECTURE
ENGINEERING

Sausalito Marin City School District | Martin Luther King Jr. Academy
December 15, 2022



AGENDA

- Introductions
- Guiding Principles
- The Journey
- 'NEW' MLK Jr Academy
- Design Theme
- Questions and Answers

SMCSD Guiding Principles

INCLUSIVITY

Curious, open minded, generous, humble and empathetic.



COLLABORATION

Flexible and committed to teamwork



OPTIMISM

Hopeful, proactive, resilient and creative



MAKING A DIFFERENCE

How can we achieve transformative outcomes?



ACCOUNTABILITY

Ethical, dependable and trustworthy

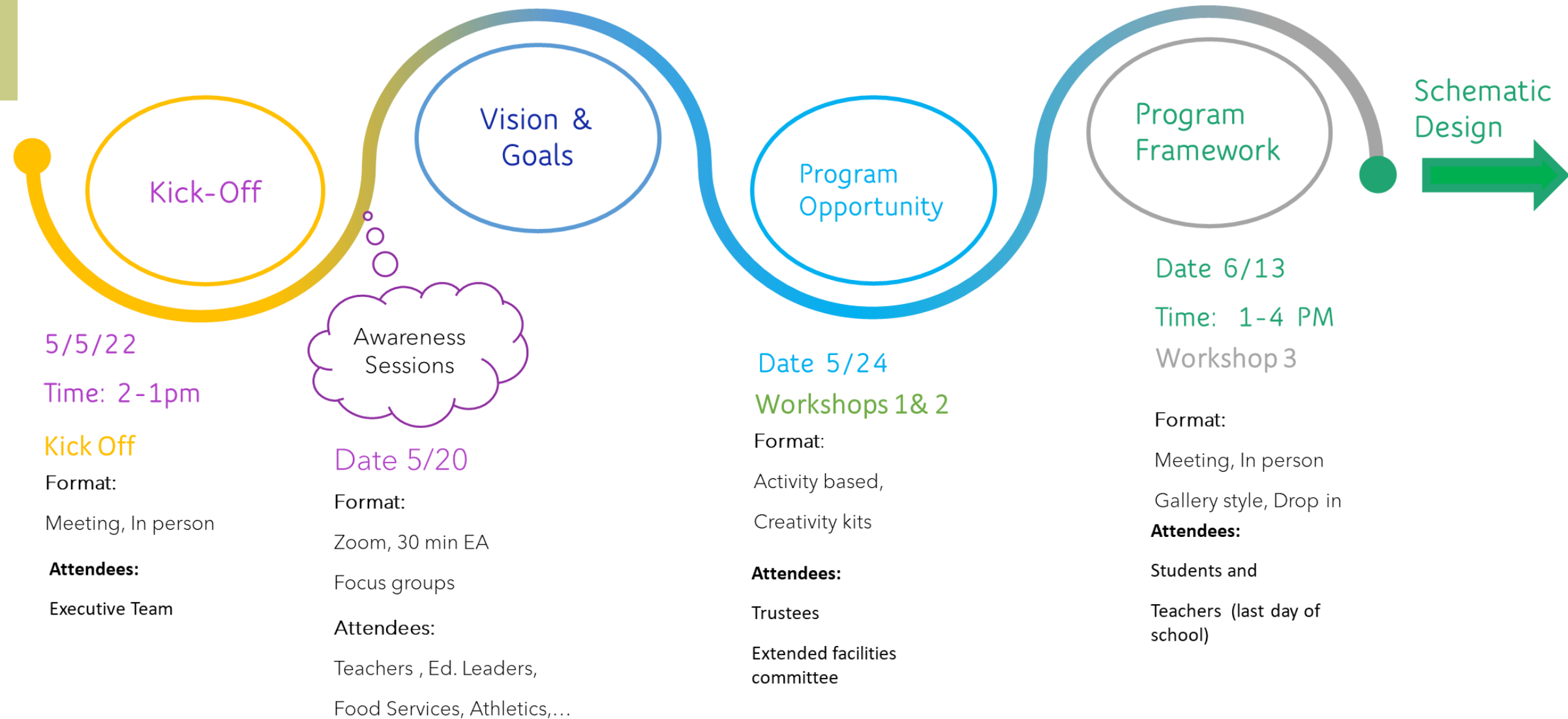


UNIFICATION

How do we become a unified community?



The Journey Road Map



The Journey Collaborations

- ❑ Back to School: 9/1/22 6:00-7:30pm Parents and Students (In person)
- ❑ Town Hall Meeting: 9/6/22 6-7pm, Community members (In Person)
- ❑ Design Meetings : Weekly, Steering Committee (via Zoom)
- ❑ Facilities Committee: Monthly (via Zoom)



Awareness Sessions – User Groups

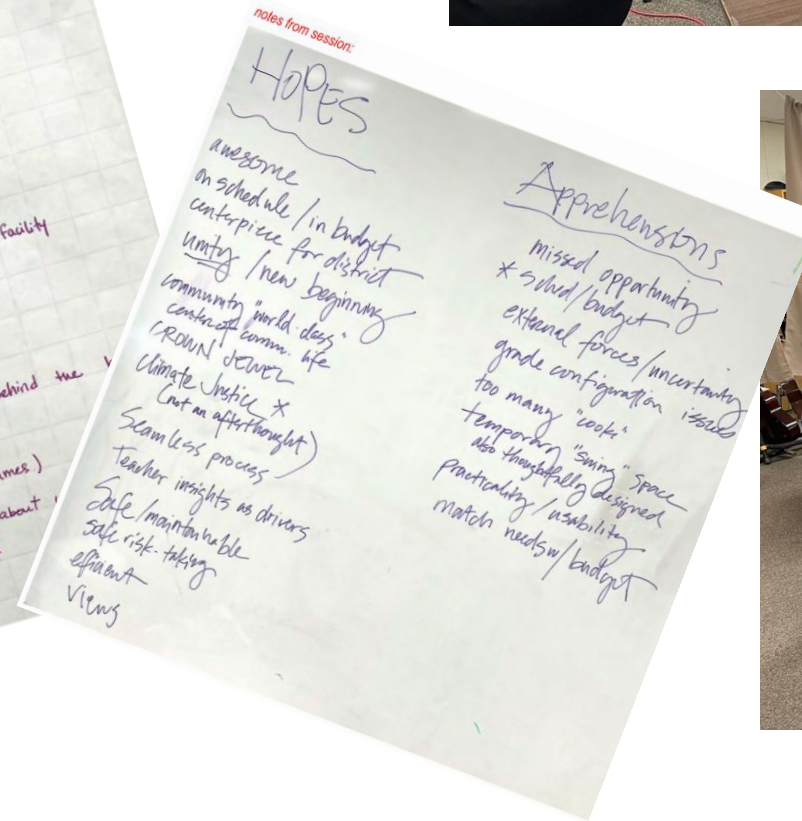
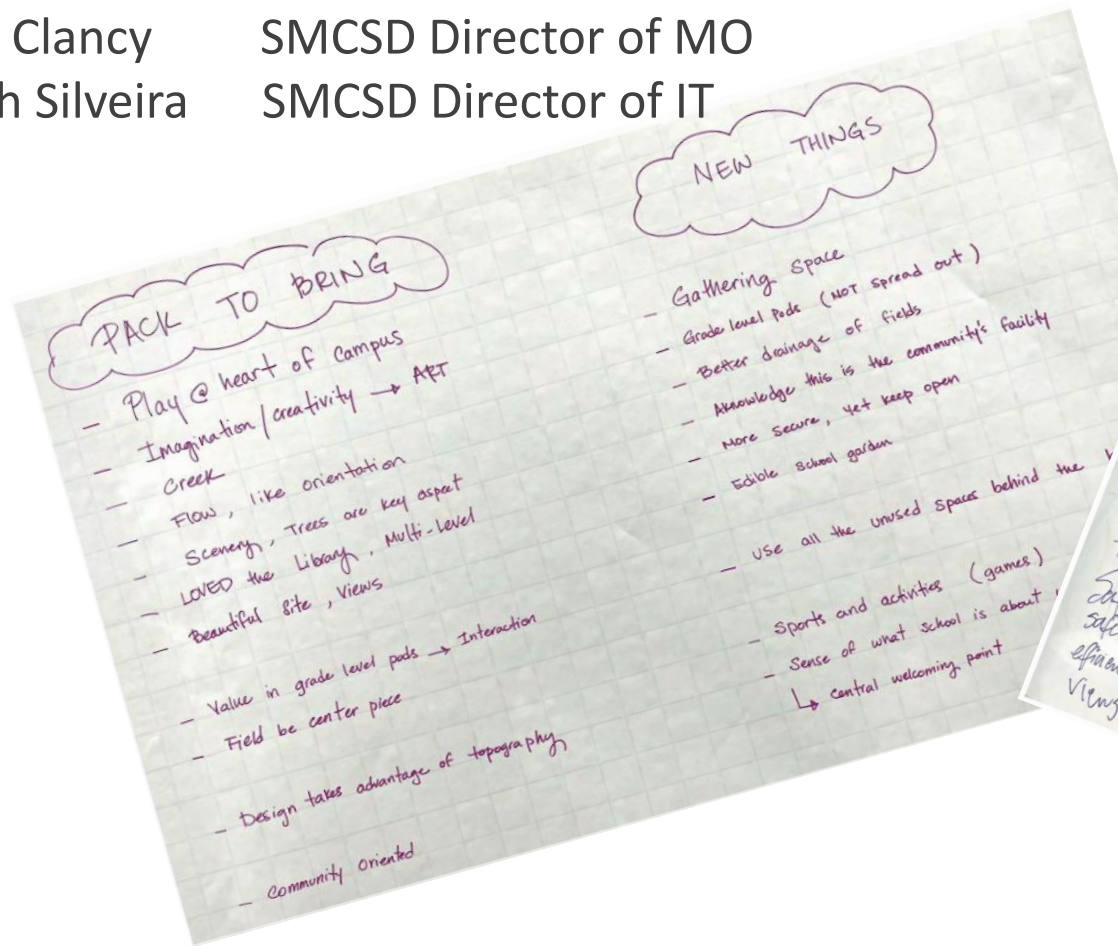
Informing space needs for the campus, and goals for the project organized into guiding themes for planning and design. These themes were shared with the steering committee, where participants discussed, and finetuned each further.

1. **ALL Learners are Supported.** One size does not fit all.
2. Occupants enjoy **Safe, Healthy and Nurturing** Environments.
3. Integration of people, programs & spaces **Promote Collaboration.**
4. **Innovative and Student-Focused** spaces inspire learning.
5. **Daylight, Outdoor Connections** & Views reinforce learning.
6. **Effective Technology** tools and resources readily available.
7. **Adaptable Environments** support multiple uses & future resiliency.
8. Student, staff & community **Diversity is respected** and supported.
9. Facilities are **Efficient, Sustainable**, easily operated & maintained.
10. The campus is an active **Hub of Community Activity** & source of pride.



Steering Committee

Ida Green Board President
Yasmin McGrane Board Member
Itoco Garcia SMCSD Superintendent
David Finnane MLK Academy Principal
Casey Clancy SMCSD Director of MO
Joseph Silveira SMCSD Director of IT



Visioning Workshops



Building placement charrette, discuss options, compare pros and cons of each concept.

Visioning Workshops

Inspirational Environments

Image Collages from both built and outdoor environments where participants could share their aesthetic preferences.



Visioning Workshops

Site Context Mapping

A Site Aerial Photograph for participants to share their knowledge of the site, campus, and surrounding property



Site Strategies

Site Strategies for Building Placement for participants to compare, and list pros and cons.

Activities – Build a Classroom

Classroom Floor Plan for participants to help layout and define the attributes of a “dream classroom”

Visioning Workshops

Whole Learner

What should our school **BE**?
What should it **HAVE**?



NEW Martin Luther King Jr. Academy

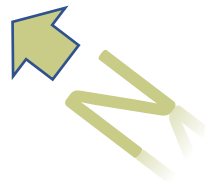
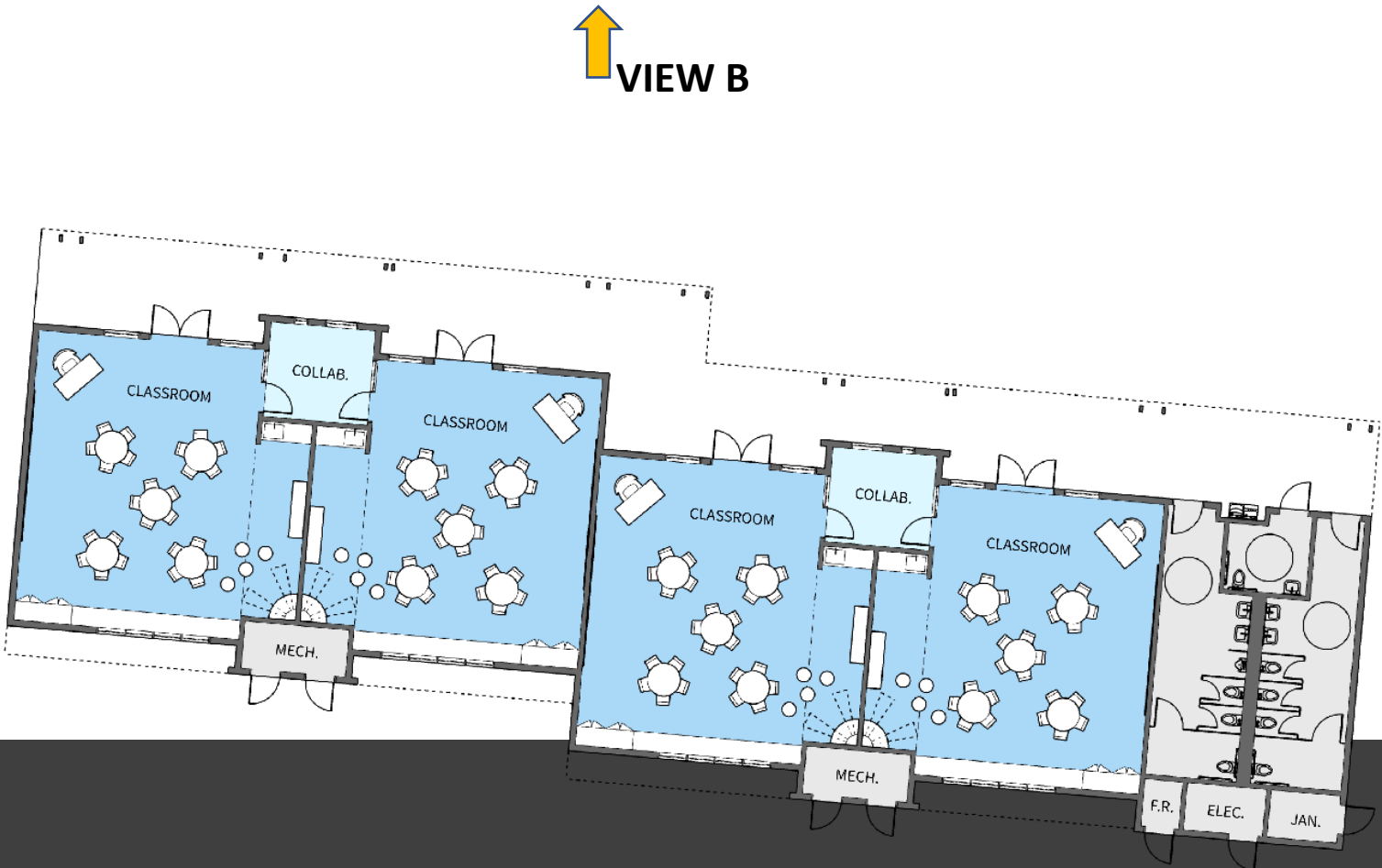
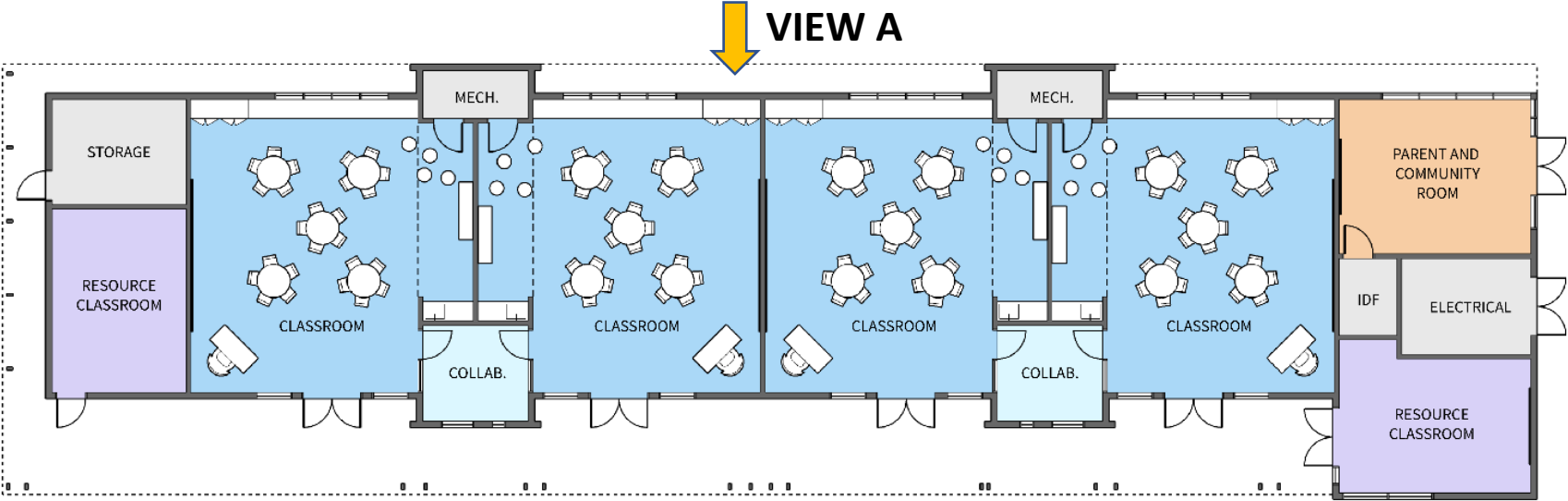


Campus Frontage
Single Point of Entry

Site Plan



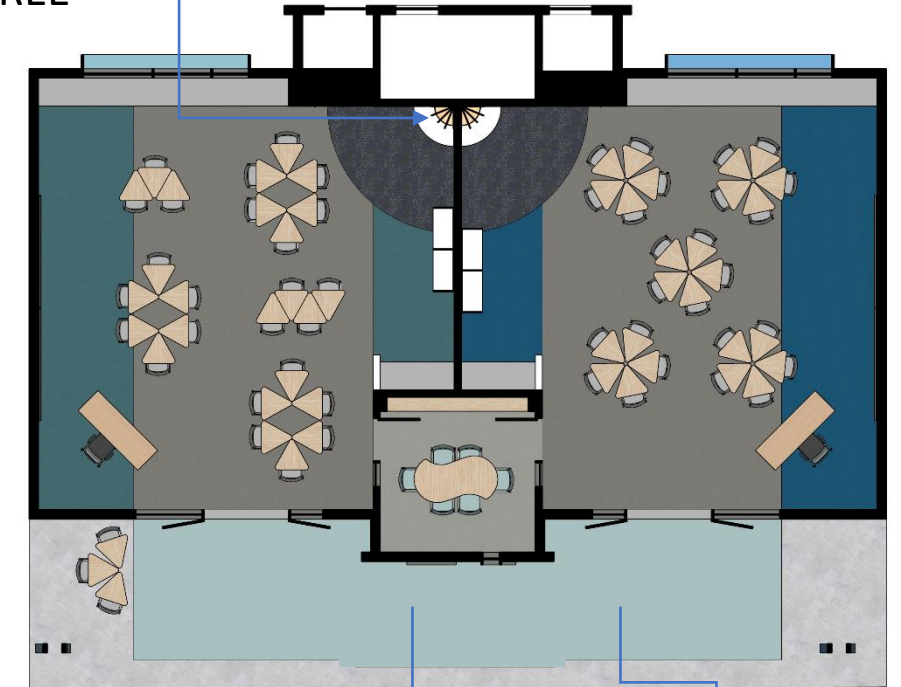
Classrooms



Classrooms Flexible Learning



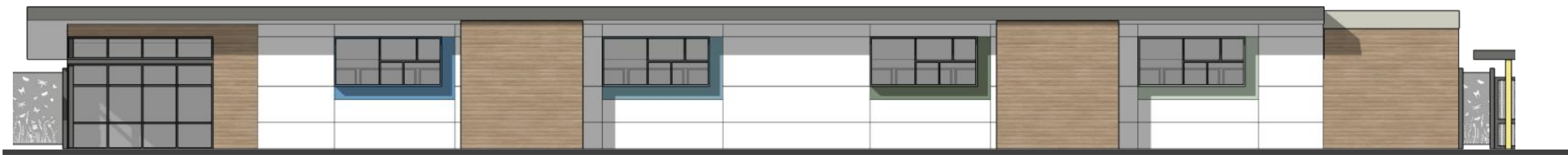
CALMING TREE



OUTDOOR LEARNING

COLLABORATION NEST

Classroom Building Elevations



VIEW A



VIEW B

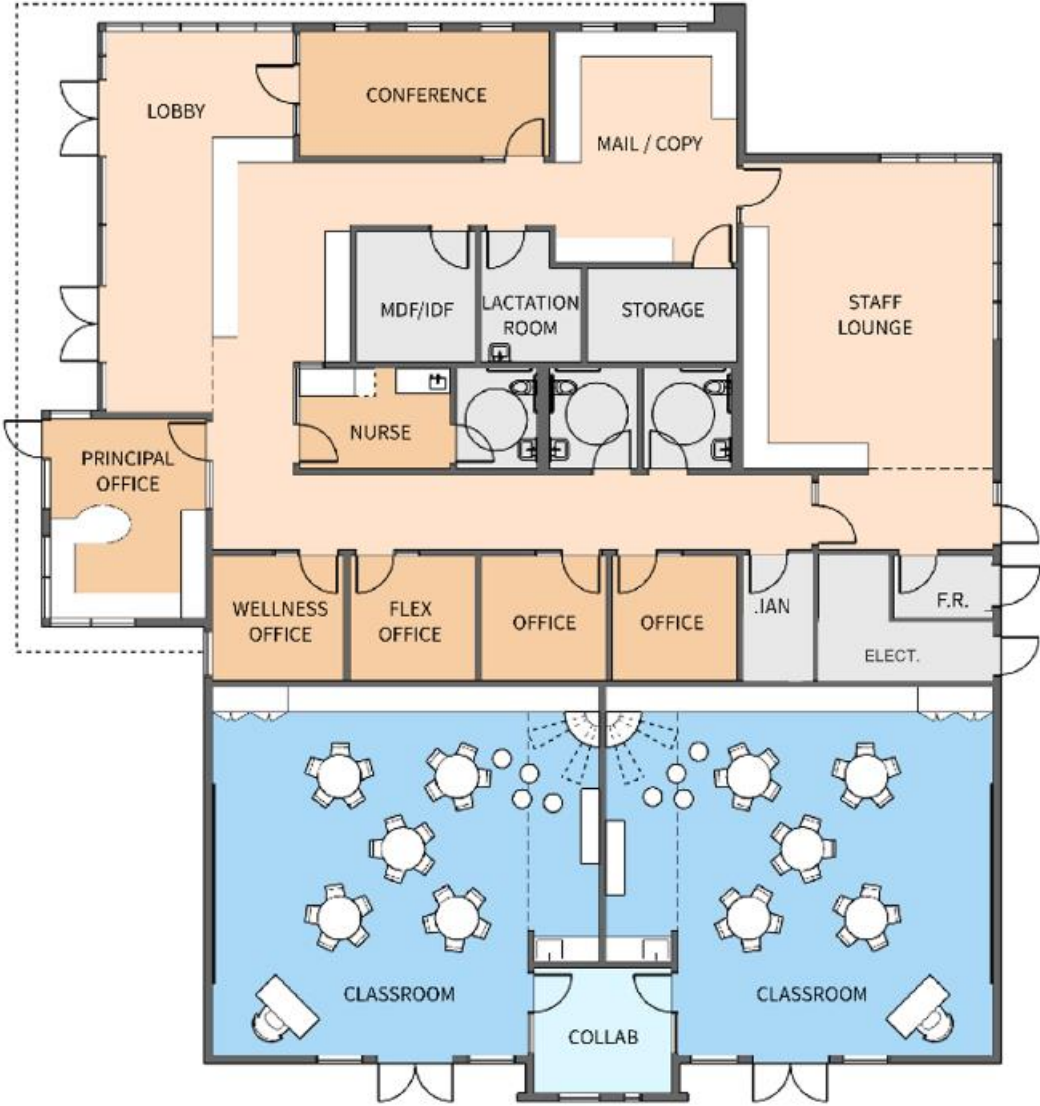
Administration Building



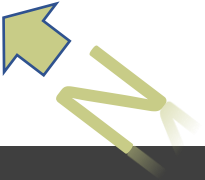
VIEW C



VIEW D



VIEW D



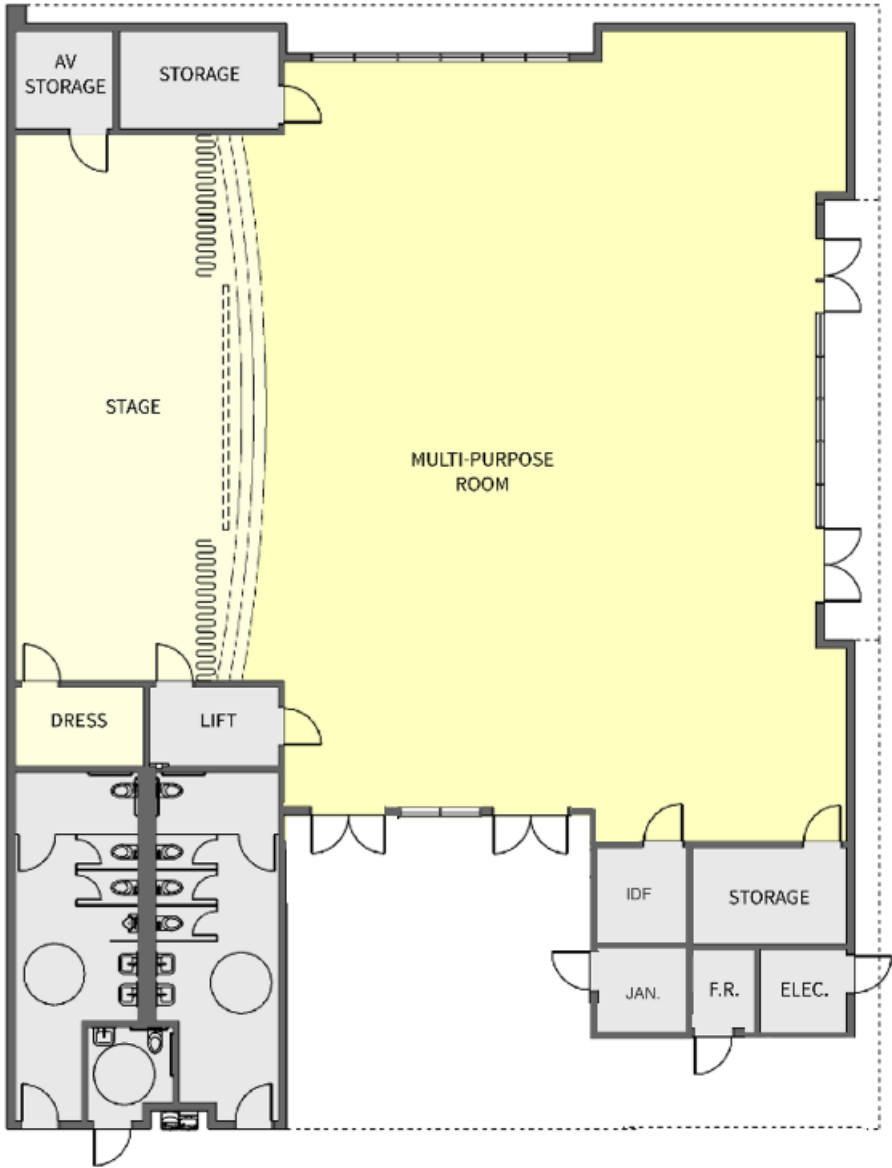
Multi-Purpose Building



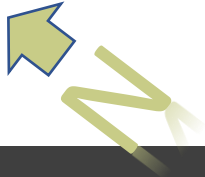
VIEW E



VIEW F



VIEW F



Library Building

Second Floor
Library
Arts
Afterschool
Community

VIEW G ↓

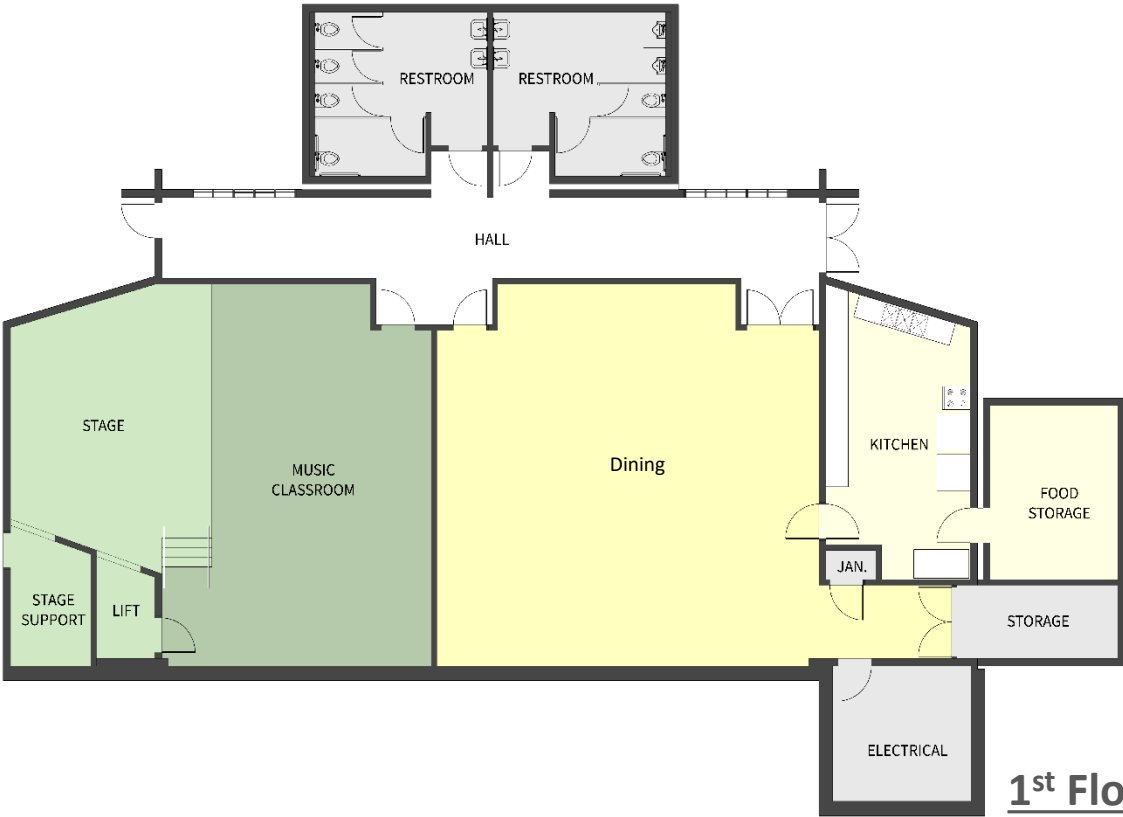


2nd Floor

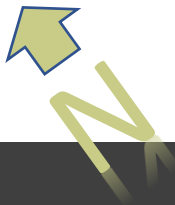
VIEW H ↑
COMMUNITY
ENTRANCE

First Floor
Music
Dinning
Kitchen

↓ VIEW G



1st Floor



Library Building Elevations

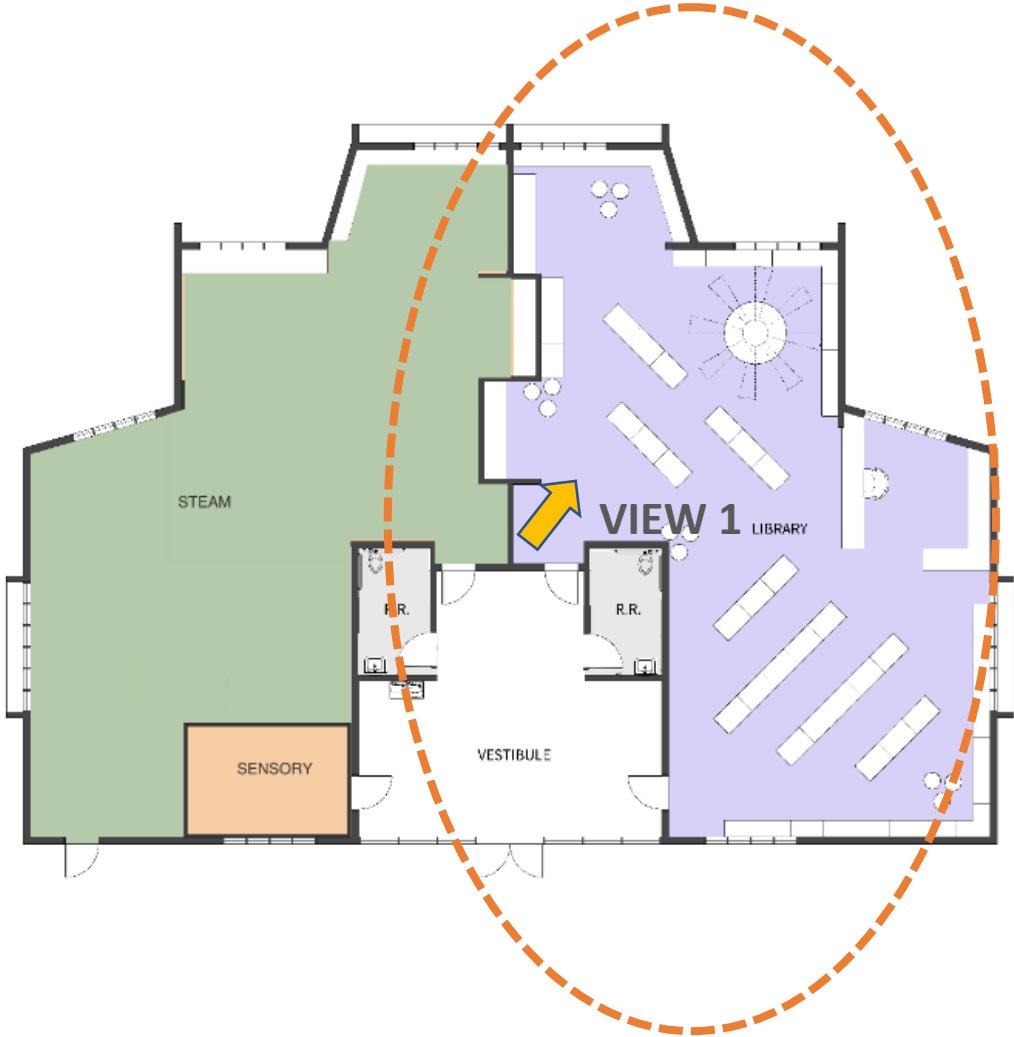


VIEW G



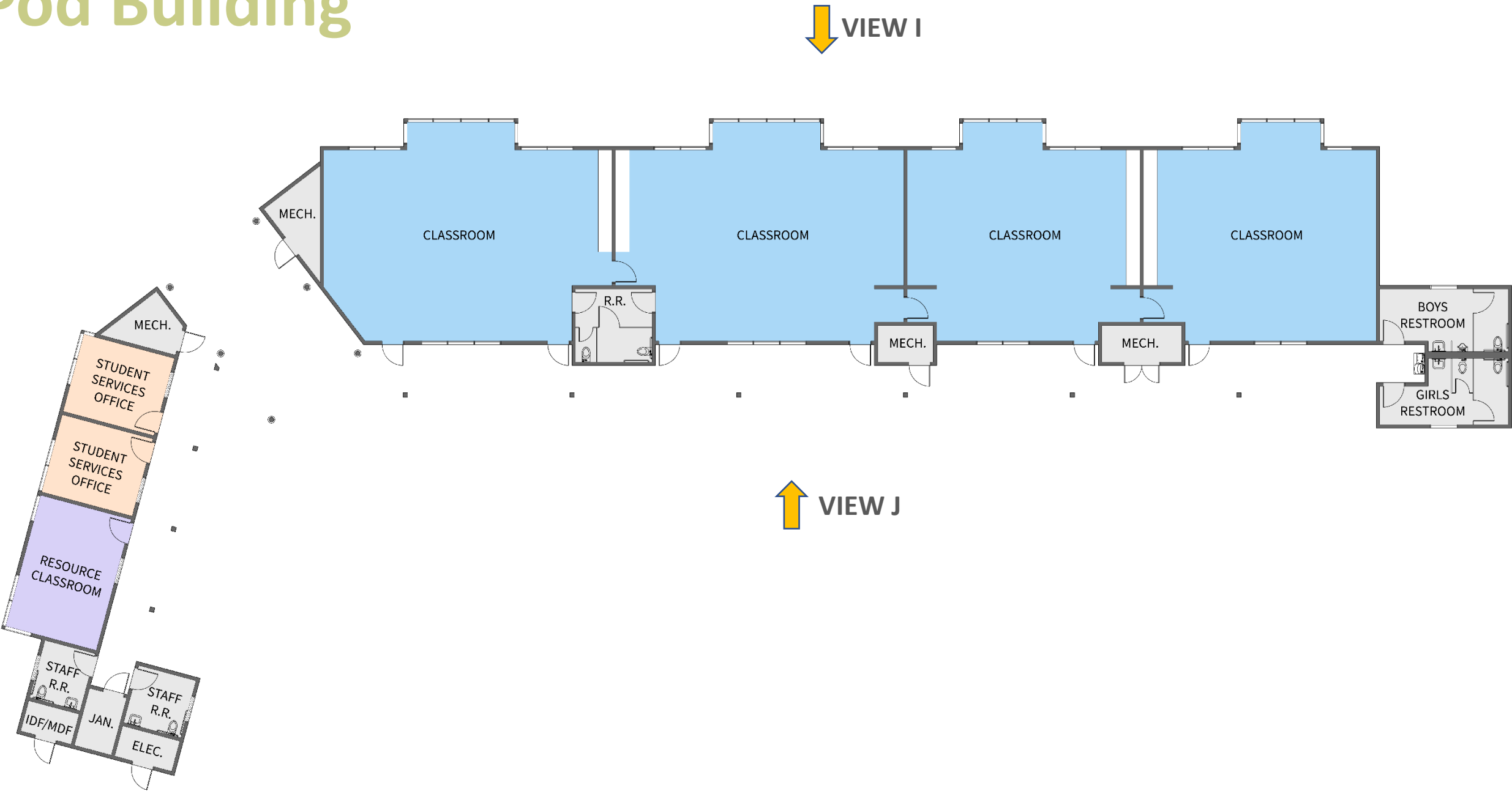
VIEW H

Modern Library



VIEW 1

K-Pod Building



K-Pod Building Elevations



VIEW I



VIEW J

Design Theme

