





# Community Schools

Enhancing Partnerships, Collaboration and  
Success in Service to Children and Families

## What is a community school?

A community school is both a place and a set of partnerships between the school and other community resources. Its integrated focus on academics, services, supports and opportunities leads to improved student learning, stronger families and healthier communities.

-Coalition for  
Community Schools



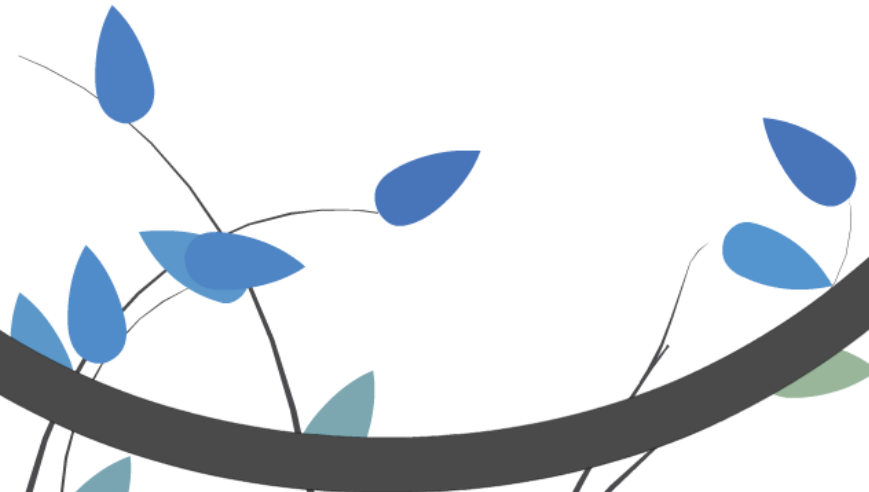
A community school is a public school that acts as the hub of its community by engaging community resources to offer a range of on-site programs and services that support the success of students and their families

Community schools focus on the whole child by providing resources to support academics, health and social services.

A Community School is characterized by:

Extended Services  
Extended Hours  
Extended Relationships

A **strategy** for organizing the resources of  
the community around student success



## Core Components of Community Schools

- Strong Academic Program
- Innovative After School, Holiday and Summer Enrichment
- Medical, Dental, Mental Health and Social Services
- Early Childhood Education
- Parent and Family Engagement
- Community Economic Development
- Adult Education



## Support for SUCCESS



# Critical Elements of Community Schools Models

Integrated Services

Community  
Partnerships

Parent Engagement

Case Management





# Integrated Services

Co-located or close proximity

One stop Shopping

Wrap Around

Family Focused

## Case Management

Family Advocates/Counselors  
Ensure families are connected to  
the services they need  
Monitor and support families

## Community Partnerships

Partners work together to  
develop and provide seamless  
services (schools, community  
based organizations and agencies)



# Three Components Work Together

Core Instructional Program

Educational and Cultural Enrichment

Services that Remove  
Barriers to Learning

(Physical and Mental  
Health, Social  
Services)



core instructional program

educational & cultural enrichment

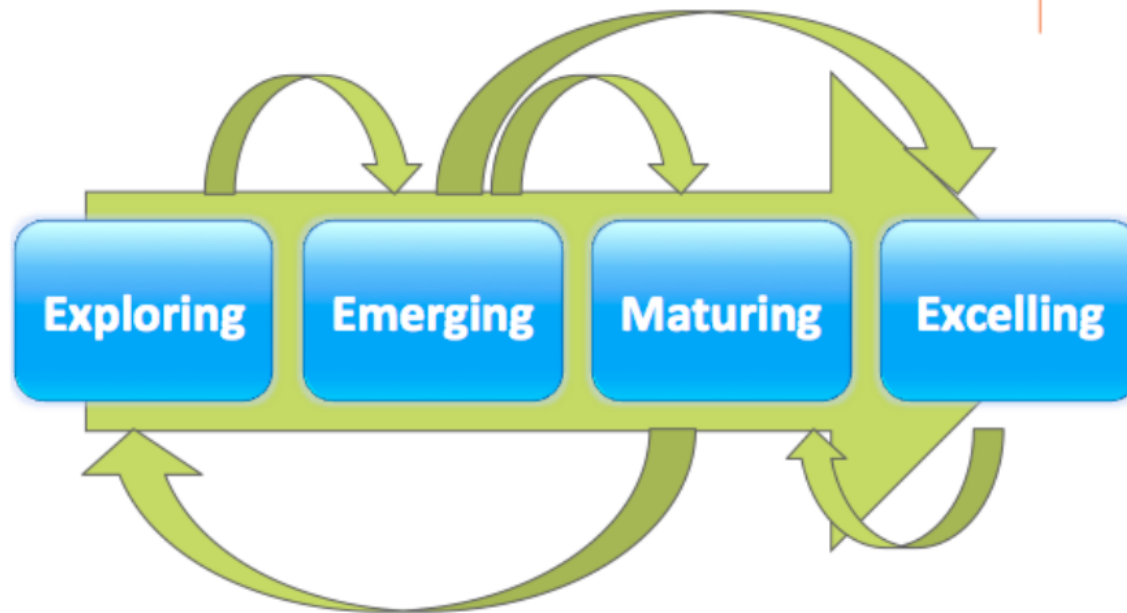
**services that remove barriers to learning**

- physical health
- mental health
- dental health
- social services

## Results and Outcomes

- Improved Academic Outcomes
- Increased Student Attendance
- Teacher Attendance Higher
- Positive School Climate (reduced discipline incidents)
- Increased Parent and Family Engagement
- Improved Mental and Physical Health
- Positive Youth Development
- Improved School Readiness

## Stages of Development in a Community School



Commitments/MOU's/Agreements  
Use of Rubrics to Grow Program





We have the beginnings.  
We have partnerships.

### Next Steps

- Continue to improve the Comprehensive Educational Program
- Develop a structure for shared planning and implementation
- Develop an integrated model
- Leverage Resources and Identify Funding

## The Moral Imperative for Community Schools

"I have the audacity to believe that peoples everywhere can have three meals a day for their bodies, education and culture for their minds, and dignity, equality and freedom for their spirits. our lives begin to end the day we become silent about things that matter"~

Dr. Martin Luther King Jr.



